



W2ER Cassette Erase 0.070" TWO CHANNEL

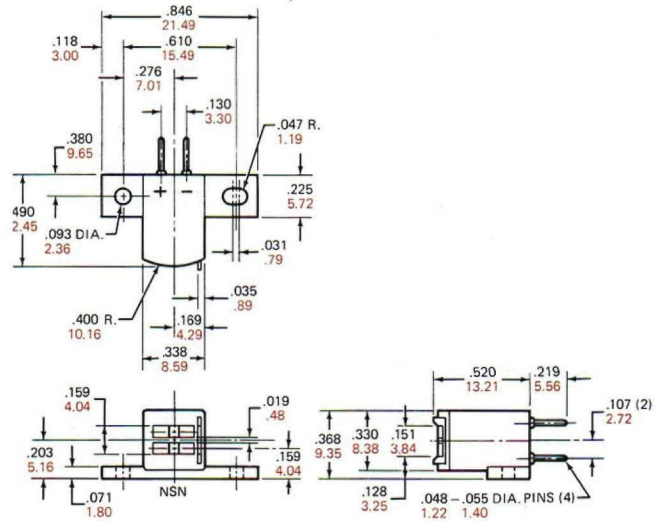
DC22P Cassette Record/Playback Monitor Head

ELECTRICAL	MODEL NUMBER					
	W2ER 47	W2ER 9	W2ER 8	W2ER 5	W2ER 3	W2ER 4
Inductance @ 1 kHz, millihenrys	.047	.28	.37	1.0	2.0	13.0
Resistance, D.C., ohms	0.9	2.2	2.6	10	14	115
Track Width, inches	.070	.070	.070	.070	.070	.070
Gap Length, Double Gap (each)	.003	.003	.004	.003	.003	.003
Typical characteristics for 70 dB erasure of a 400 Hz saturated signal on 3M277 tape						
Erase Voltage @ 100 kHz, volts	4.0	10.0	12.0	18	22	62
Erase Current, ma	100	60	60	23	17	6.1
Impedance, 100 kHz, ohms	30	180	235	680	1400	6500

PHYSICAL CONFIGURATION

INCHES IN BLACK
MILLIMETERS IN COLOR

BASIC HEAD CONFIGURATION



DC22P CASSETTE RECORD/PLAYBACK MONITOR HEAD



.150" format cassette dual gap record and playback combination head. Available in the 2 channel 2 track format and ideal for broadcast programming, instrumentation and logging recorders and similar application requiring on tape monitoring to assure recording reliability.

Record section available with a 10 mhy inductance and a 100 microinch gap. Play section available with a 100 mhy inductance and a 50 microinch gap.

